



# **Executive Oversight Committee**

## **Monday, May 17, 2010**

---





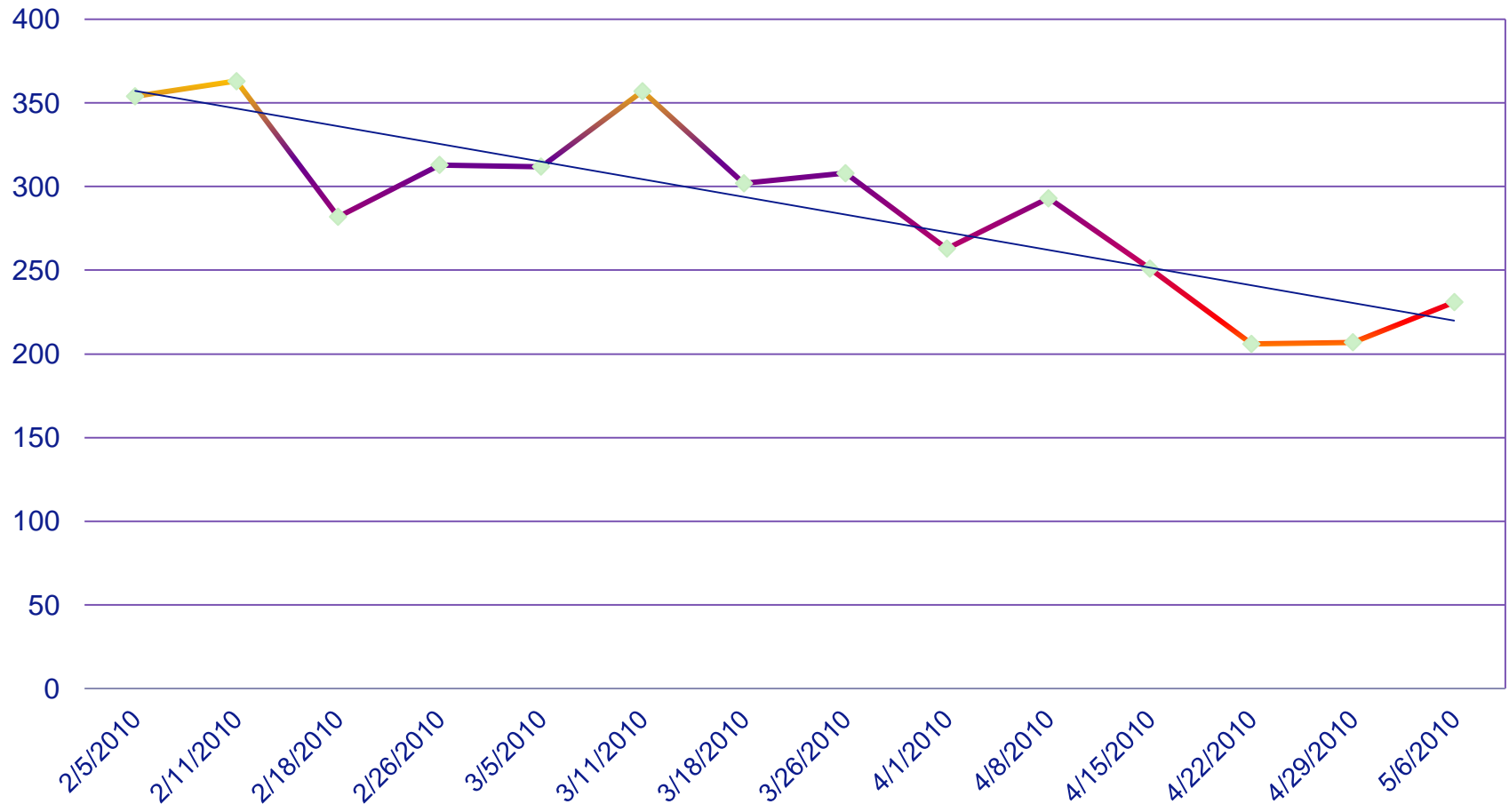
# **Production Support**

## **Monday, May 17, 2010**

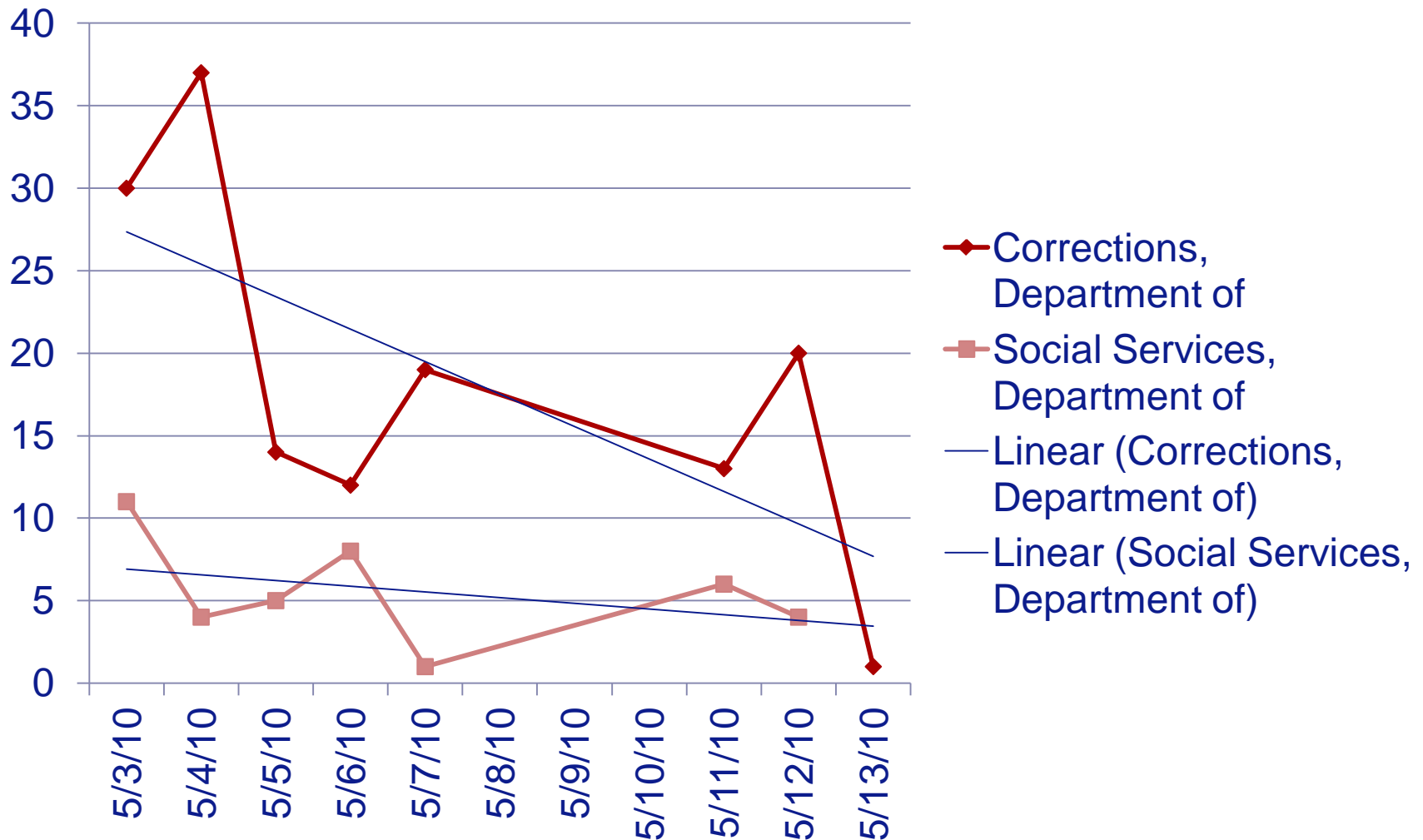
---



# Production Support Service Desk Ticket Trends



# Production Support Service Desk Tickets DSS/SCDC



# Production Support Service Desk Aging Report

	<= 5 Days	6 to 10 Days	11 to 15 Days	> 15 Days	Totals
FI Team	<u>32</u>	<u>15</u>	<u>2</u>	<u>30</u>	<u>79</u>
MM Team	<u>12</u>	<u>14</u>	<u>0</u>	<u>17</u>	<u>43</u>
HR ESS	<u>1</u>	<u>0</u>	<u>0</u>	<u>0</u>	<u>1</u>
HR MSS	<u>0</u>	<u>0</u>	<u>0</u>	<u>0</u>	<u>0</u>
HR PA/OM	<u>1</u>	<u>0</u>	<u>1</u>	<u>0</u>	<u>2</u>
HR Payroll	<u>0</u>	<u>1</u>	<u>0</u>	<u>11</u>	<u>12</u>
HR Time	<u>1</u>	<u>1</u>	<u>1</u>	<u>0</u>	<u>3</u>
HR Travel	<u>0</u>	<u>0</u>	<u>0</u>	<u>0</u>	<u>0</u>
HR Team	<u>1</u>	<u>0</u>	<u>0</u>	<u>0</u>	<u>1</u>
IM Team	<u>5</u>	<u>4</u>	<u>1</u>	<u>4</u>	<u>14</u>
EC&C Group	<u>0</u>	<u>1</u>	<u>0</u>	<u>1</u>	<u>2</u>
Blackboard Tier II	<u>2</u>	<u>0</u>	<u>1</u>	<u>0</u>	<u>3</u>
Training Team	<u>0</u>	<u>1</u>	<u>0</u>	<u>0</u>	<u>1</u>
Security Team	<u>7</u>	<u>2</u>	<u>1</u>	<u>3</u>	<u>13</u>
Integration Team	<u>0</u>	<u>1</u>	<u>0</u>	<u>4</u>	<u>5</u>
BW Team	<u>0</u>	<u>0</u>	<u>1</u>	<u>5</u>	<u>6</u>
Development Team	<u>1</u>	<u>3</u>	<u>0</u>	<u>2</u>	<u>6</u>
Workflow	<u>0</u>	<u>1</u>	<u>0</u>	<u>5</u>	<u>6</u>
Deployment Team	<u>0</u>	<u>1</u>	<u>0</u>	<u>0</u>	<u>1</u>
CG Vendor	<u>1</u>	<u>1</u>	<u>1</u>	<u>0</u>	<u>3</u>
CG Payroll	<u>2</u>	<u>0</u>	<u>0</u>	<u>2</u>	<u>4</u>
CG Accounts Payable	<u>0</u>	<u>0</u>	<u>0</u>	<u>0</u>	<u>0</u>
Enhancements Team	<u>0</u>	<u>1</u>	<u>0</u>	<u>26</u>	<u>27</u>
Performance	<u>2</u>	<u>0</u>	<u>0</u>	<u>0</u>	<u>2</u>
	<u>68</u>	<u>47</u>	<u>9</u>	<u>110</u>	<u>234</u>



# **FI/MM Phase 4 Status**

## **Monday, May 17, 2010**

---



# Phase 4 and Phase 4a Schedule

## 🌀 Phase 4 (FI/MM)

May 3

- Department of Corrections
- Department of Social Services

## 🌀 Phase 4a (FI/MM)

August 2

- Department of Health and Environmental Control

### Phase 4 (FI/MM)

Live

- Had SCEIS members onsite to support during first two week periods (Service Desk reflects this support)
- Both agencies had the normal challenges with Budget and Security issues
- All Interfaces are flowing with special attention to DSS



## 🌀 Phase 4 (FI/MM)

- Shopping Cart Line Items
  - SCDC – 463
  - DSS – 10
- Standard Purchase Orders
  - SCDC – 3 (3 line items with a value \$803.47)
  - DSS has not started creating new Purchase Orders
- Inventory Purchase Orders
  - SCDC – 111 (639 line items with a value of \$9,695.19)
- Stock Transfer Orders
  - SCDC – 85 (6883 line items)

## 🌀 Phase 4 (FI/MM)

### – AP Invoices Entered

- DSS – 2034 for value of \$14,690,136.41
- SCDC – 516 for value of \$2,530,246.16

### – Checks Written Out

- DSS – 1374 for a value of \$13,853,214.93
- SCDC – 263 for a value of \$2,488,055.83

### – Sales Orders

- SCDC – 39 Sales orders

### – Sales Invoices:

- SCDC – 37 for a value of \$1,849,716.00

## 🌀 Phase 4 - Interfaces

### – DSS Interfaces:

- Child Support – IF383 Direct Pay Interface – 14 files received – Total \$ Value = \$2,516,396.69
- Others – IF383 Direct Pays made up of CAPSS Foster Care & Adoption Subsidy, FIFN (Family Independence Financial), CAPSS (Intensive Foster Care), CHIP, CACFP (Child and Adult Care Food Program), and ABC (Child Care Voucher) – 56 files – Total \$ Value = \$11,320,708.35.
- Total of all DSS files processed through Interfaces = **\$13,837,105.04**

### – SCDC Interfaces:

- Medical Invoicing and Inmate Pay – IF383 (Direct Pay) – 15 files received – Total \$ Value = \$ 3,419,091.85
- Cooper Inmate Banking, Special Funds, Work Center Accounting – IF387 (Journal Entries) – 16 Files Received – Total \$ Value = \$ 2,849,355.97
- Work Center – IM389 (Shopping Carts) – 14 Shopping Carts created.
- Total of all SCDC files processed through Interfaces = **\$6,268,447.82**

### 🌀 Phase 4a (FI/MM)

August 2

#### – Department of Health and Environmental Control

- Meet weekly with DHEC to discuss open issues
- Have reset the dates and deliverables for the August 2 go-live
- DHEC will start next week working hands-on in SCEIS to finish the Finance Master Data structure

# Wave 2 and Wave 3 HR/Payroll

## 🌀 Wave 2 (HR/Payroll)

June 2/July 1

- 37 Agency

## 🌀 Wave 3 (HR/Payroll)

Sept 1/Oct 1

- Department of Corrections
- Department of Social Services
- Department of Health and Environmental Control

- Wave 2 Instructor Led User Training is 75% complete
- Wave 2 Agency Data Loads to Production begin May 16 (after 6 PM)
- Wave 3 Role Mapping for DSS, DHEC, and SCDC begins May 19
- Wave 2 Go Live/Ready Room Activities (Onsite Browning Road support) begin June 2

## 🌀 2010 CAFR

- Closing Packages required for 2010

## 🌀 BOR II Project 1 Qtr 2011

- Print contingent checks out of SCEIS

## 🌀 Department Of Transportation

- Started initial meetings with SCDOT – Next meeting Tuesday, May 18
- DOT Scope September 1
- Currently working on Project Staffing requirements
- Phase 2 (FI/MM/HR/Payroll) July 2011